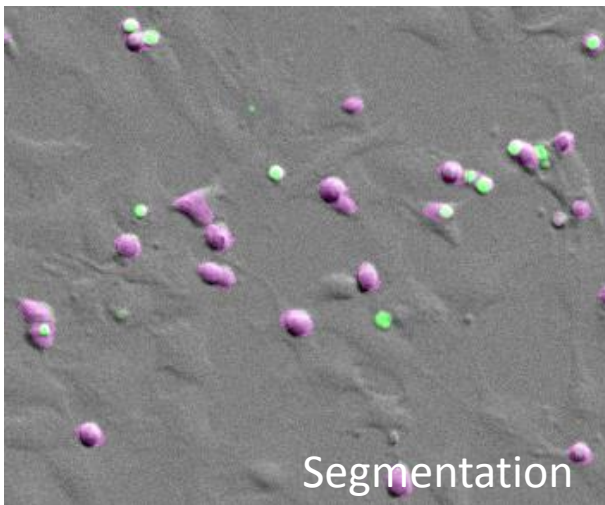
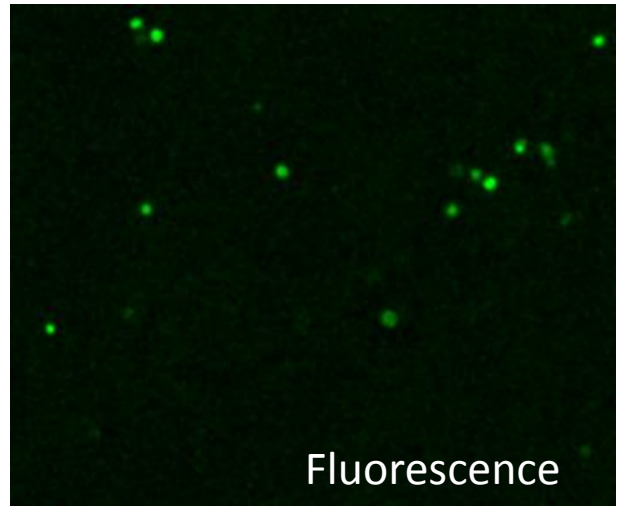
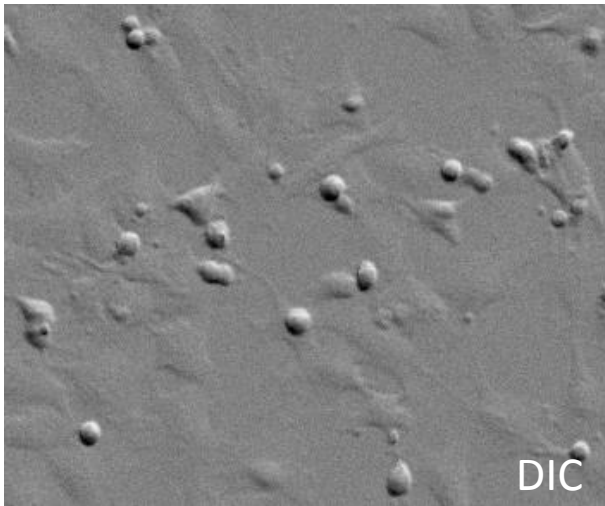


Expression in apoptotic cells on DIC images

AIM: Quantify number of apoptotic cells in DIC and fluorescence channel within a timecourse

Input: Widefield fluorescence and DIC image.

Description: Apoptotic cells were found and counted based on morphology in DIC then classified as positive or negative. Total positive nuclei were segmented on the fluorescence channel. Cells were counted on each timeframe.



Output:

Frame	DIC_Number	Fluorescence_Number	Fluorescence_in_DIC
1	69	9	6
2	45	9	6
3	22	11	2
4	44	11	7
5	53	12	4
6	73	11	6
7	68	11	8
8	74	12	8
9	62	17	10
10	70	18	10
11	77	23	13
12	87	28	19
13	123	32	20

