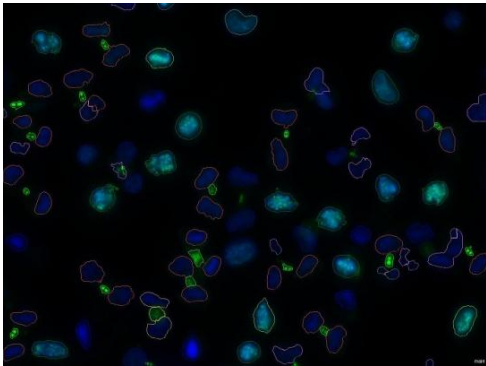


Define and count different stages of the mitotic cell cycle

AIM: Count cells depending on which stage of the cell cycle they are in.

Input: fluorescence images.

Description: Cells are identified and classified according to their cell cycle stage.



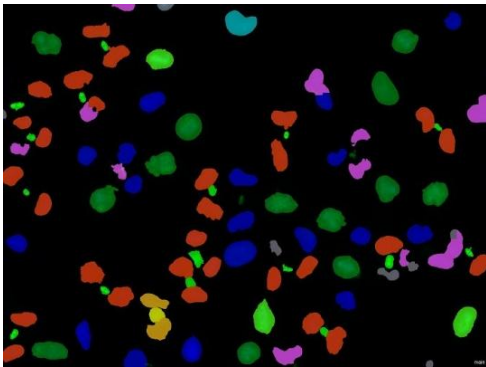
A 1

A 1 Multichannel raw data

A 2 Identified and classified cells

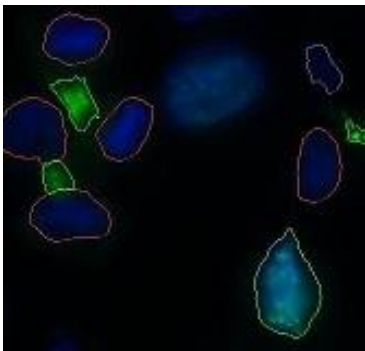
B 1 Multichannel raw data
- Detail view

B 2 Identified and classified cells
-Detail View



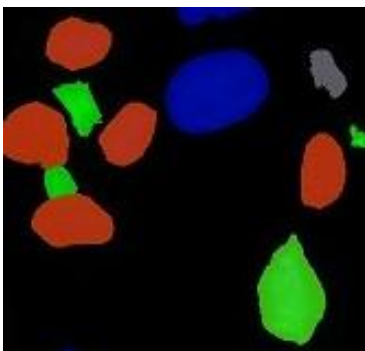
A 2

- Prophase
- Metaphase
- Anaphase
- Telophase
- cells not assigned a specific phase



B 1

Output:



B 2

	A	B	C	D	E	F	G
1	scene name	No. of Phase_1	No. of Phase_1	No. of Phase_2	No. of Phase_3	No. of Phase_4	No. of Phase_5
2	slideB_	2	1	7	2	0	0
3	slideB_1	1	0	8	4	0	0
4	slideB_10	1	4	18	2	0	0
5	slideB_11	0	4	17	1	1	0
6	slideB_12	1	6	18	2	0	0
7	slideB_13	1	3	15	1	0	0
8	slideB_14	3	3	10	0	0	0
9	slideB_15	2	1	9	2	0	0
10	slideB_16	1	1	16	1	0	0
11	slideB_17	1	3	9	2	0	0