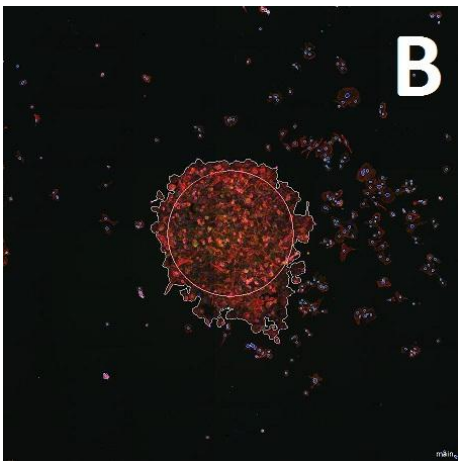
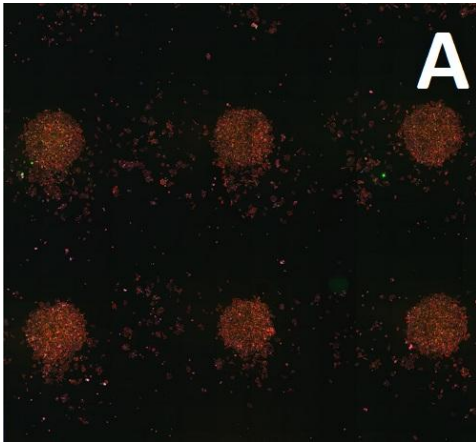


# Evaluate Cell Migration Essay

**AIM:** Find how far cells have migrated from the initial position.

**Input:** Fluorescence whole slide scans, automatically acquired with Mirax scanner.

**Description:** The size of cell clusters after migration experiment was compared with control.



A cell clusters on the slide

B cell cluster with outlines

C cell cluster filled;

● Area covered at start

○ Area of migration

## Output:

scene_name	Area of Migration (Pxl)	Area of Start (Pxl)
MiraxSlide2.Copies.subsets.subset	634517	769427
MiraxSlide2.Copies.subsets.subset_10	407450	769671
MiraxSlide2.Copies.subsets.subset_11	614589	769674
MiraxSlide2.Copies.subsets.subset_12	607819	769676
MiraxSlide2.Copies.subsets.subset_13	399001	767373
MiraxSlide2.Copies.subsets.subset_14	522514	769395
MiraxSlide2.Copies.subsets.subset_15	499061	767742
MiraxSlide2.Copies.subsets.subset_16	379877	769676
MiraxSlide2.Copies.subsets.subset_17	350898	751907