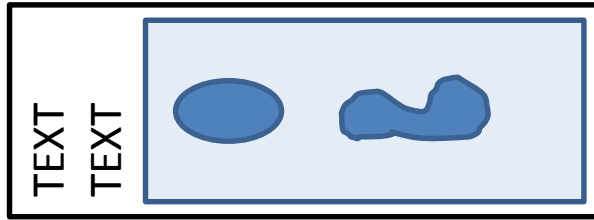


Rules for Experiments with the Slide Scanner

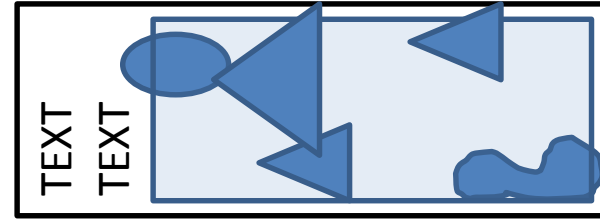
- Arrangement for scanning **MUST** be done with the Facility Staff - either by person or by sending an Email to slidescanner@imp.ac.at
- Embedding medium for the slides to be scanned **MUST** be dried (see page 2) – don't put nail polish around the coverslip

*Last minute scans will not always be possible, so
please plan in advance!*

How to prepare slides for automated scanning



Good

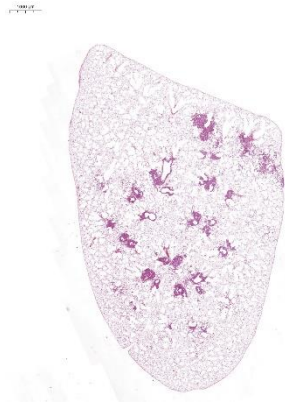


Bad

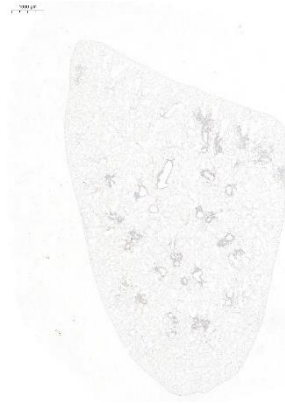
- Place the sections in the middle of the slide; avoid contact with the edges
- Use coverslips that do not exceed the dimensions of 50 x 22 mm.
- Use as little embedding medium as possible – only permanent mounting.
Slides for transmitted light MUST dry for 48 h at ca 50°C, or 120 h at room temperature!!!
- For fluorescence, please use a curing medium such as, and let them dry. Don't use nailpolish:
 - ✓ Dako Fluorescence Mounting Medium **S3023** (almost no air bubbles formed during curing)
 - ✓ ProLong Gold or ProLong Diamond
 - ✓ VECTASHIELD HardSet.
- The scanner software recognizes the tissue to be scanned based on its contrast.

For tissues with less parenchyma or cellular density and weaker staining patterns (that are hardly visible to the naked eye) **please mark the area to be scanned with a BLACK marker pen** (e.g. Staedtler Lumocolor) **on the coverslip** (do not use a “Sharpie” / Secureline Lab Marker). Draw a circle/ellipse around the tissue leaving a 3mm wide space from the outer edge of the tissue (see the images that follow).

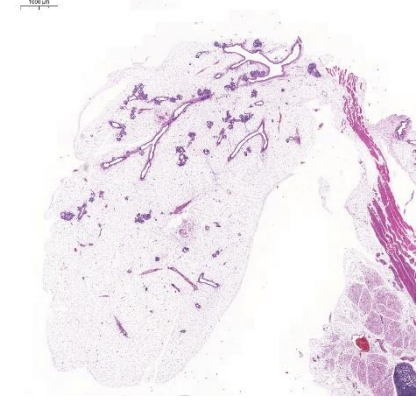
It is required to mark tissues that have less parenchyma, especially when they have faint staining patterns. It is recommended to mark tissues that have mixed areas (with dense and sparse regions of cellularity).



Lung, Hematoxylin & Eosin



Lung, Immunohistochemistry (DAB)

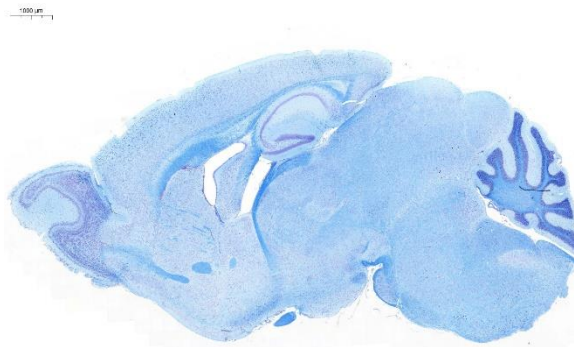


Mammary gland, Hematoxylin & Eosin

It is not be necessary to mark tissues with strong staining



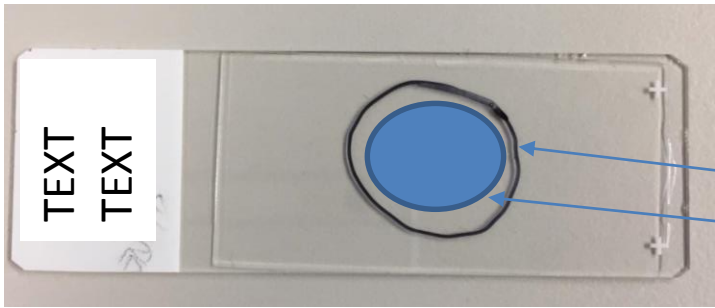
Tumor, Hematoxylin & Eosin



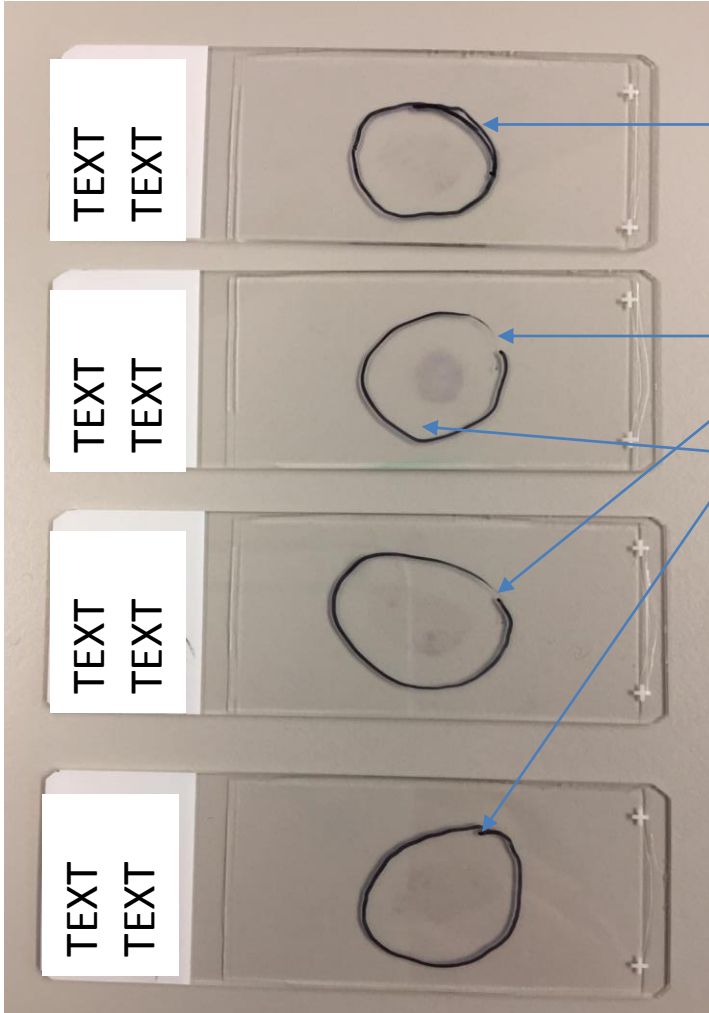
Brain, Luxol Fast Blue Cresyl Violet



Brain, Immunohistochemistry (DAB)



Properly marked
(complete boundary,
~3mm space)



Wrong – double line

Wrong – open line / incomplete boundary

Too much space between the edge of
the tissue and the marked boundary

